

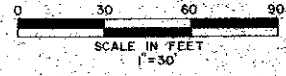
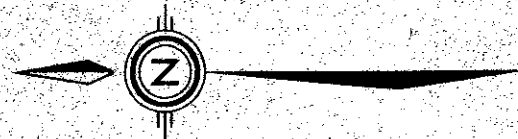
VILLAS AT LUCERNE LAKES PLAT NO.2

BEING A PORTION OF LUCERNE LAKES P.U.D.

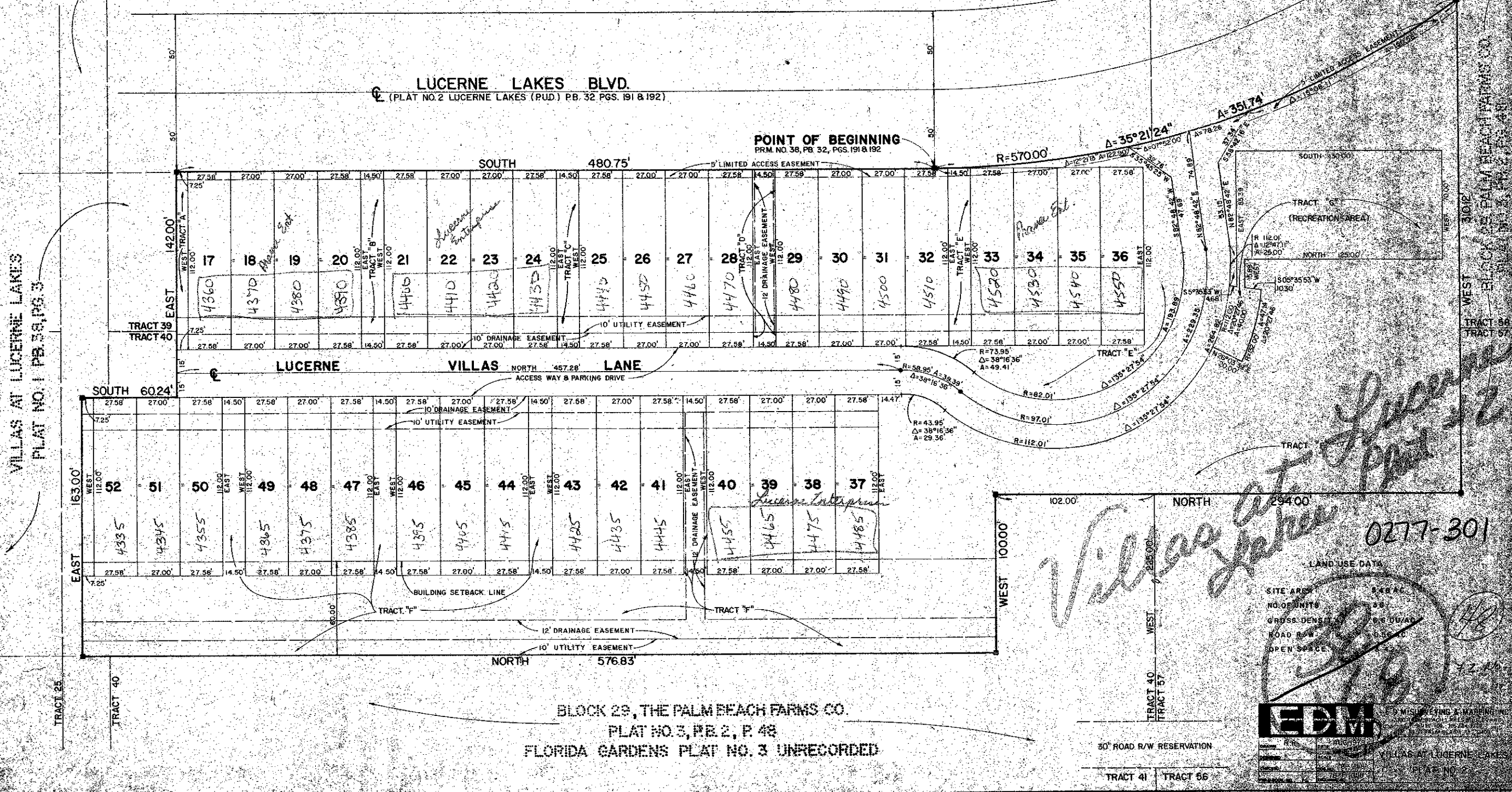
BEING A REPLAT OF A PORTION OF BLOCK 29, PALM BEACH FARMS PLAT NO.3 PALM BEACH COUNTY, FLORIDA AS RECORDED IN PLAT BOOK 2, PAGE 48 PALM BEACH COUNTY PUBLIC RECORDS.

AUGUST 1979
SHEET 2 OF 2

108



30' ROAD R/W RESERVATION ABANDONED VIA COUNTY RESOLUTION R-72-282, OR B 2034, PGS. 1293 THRU 1295, PUBLIC RECORDS OF PALM BEACH COUNTY, FLORIDA.



VILLAS AT LUCERNE LAKES
PLAT NO. 1 PB 33, PGS. 3

WEST 310' BLOCK 29 PALM BEACH FARMS CO.
TRACT 56
TRACT 57

Lucerne Villas at Palm Beach Farms
0277-301

LAND USE DATA

| | |
|---------------|--------------|
| SITE AREA | 3.8 AC |
| NO. OF UNITS | 38 |
| GROSS DENSITY | 9.8 UNITS/AC |
| ROAD R/W | 0.56' |
| OPEN SPACE | 10% |

EDM ENGINEERING & SURVEYING, INC.
1000 N. W. 10th St., Ft. Lauderdale, FL 33304
TELEPHONE: 335-1100

BLOCK 29, THE PALM BEACH FARMS CO.
PLAT NO. 3, PB 2, P. 48
FLORIDA GARDENS PLAT NO. 3 UNRECORDED

30' ROAD R/W RESERVATION

TRACT 41 TRACT 56